

ENGLISH

I. Complete the following sentences by adding the appropriate parts of the sentences given in the box.

1. Many wise men answered the king's questions, _____
2. Someone suggested that there should be a council of wise men _____
3. Someone else suggested that the king should have a timetable _____
4. The king requested the hermit _____
5. The king washed and dressed the bearded man's wound, _____

- | |
|---|
| • but the bleeding would not stop. |
| • to answer three questions. |
| • but their answers were so varied that the king was not satisfied. |
| • and follow it strictly. |
| • to help the king act at the right time. |

II. Imagine yourself to be Granny. Write a diary entry expressing your ardent wish to climb trees and your family's disapproval of it.

III. Correct the following sentences :

1. He has left for his native village yesterday.
2. I had completed the work.
3. He told me that he has solved all the sums.
4. I informed you about this before.
5. I know you for many years.
6. She had seen a lion in the circus.
7. He is pass in English and is fail in Mathematics.
8. If you help me, I give you a reward.
9. It is raining heavily since a week.
10. The patient died before the doctor arrived.

HINDI

1. निम्नलिखित गद्यांश को पढ़कर पूछे गए प्रश्नों के उत्तर लिखिए -

मनुष्य का सबसे बड़ा गुण है, 'आत्मनिर्भरता' तथा सबसे बड़ा अवगुण है, 'स्वावलंबन का अभाव।' स्वावलंबन सबके लिए अनिवार्य है। जीवन के मार्ग में अनेक बाधाएँ आती हैं, यदि उनके कारण हम निराश हो जाएँ, संघर्ष से जी चुराए या मेहनत से दूर रहे तो भला हम जीवन में कैसे सफल होंगे? अतः आवश्यक है कि हम स्वावलंबी बने तथा अपने आत्मविश्वास को जाग्रत करके मजबूत बने। आत्मविश्वास तथा आत्मनिर्भरता से आत्मबल मिलता है जिससे मनुष्य श्रेष्ठ कार्यों की ओर प्रवृत्त होता है। आत्मविश्वास, आत्मसम्मान,

आत्मबल, साहस, संतोष, धैर्य आदि गुण स्वावलंबन के सहोदर हैं। स्वावलंबी मनुष्य, राष्ट्र तथा मानव मात्र के जीवन में सर्वांगीण सफलता प्राप्ति का महामंत्र है।

- (क) जीवन में सफलता प्राप्त करने के लिए कौन-सा गुण आवश्यक है?
(ख) आत्मविश्वास क्यों आवश्यक है और कैसे जाग्रत हो सकता है?
(ग) स्वावलंबन का सहोदर किसे कहा गया है?
(घ) 'आत्मबल' के लिए क्या आवश्यक है?
(ङ) उपर्युक्त गद्यांश के लिए उपयुक्त शीर्षक लिखिए।

2. (क) खंड 'क' में दिए गए शब्दों का मिलान खंड 'ख' में दिए गए उचित शब्दों के साथ कीजिए-

क	ख
पत्र	आँख
नासिका	पत्ता
अक्षि	नाक

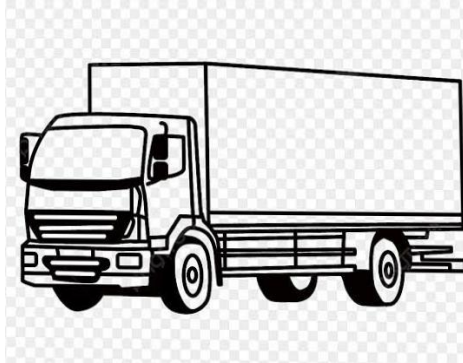
(ख) निम्नलिखित शब्दों में उचित स्थान पर नुक्ता लगाइए-

- (i) इज्जत (ii) अंग्रेज

(ग) निम्नलिखित शब्दों के समान अर्थ वाले (दो-दो) शब्द लिखिए-

- (i) विघ्न (ii) अरमान

3. चित्र को देखकर 'र' पदेन वाला एक शब्द लिखिए-



4. निम्नलिखित प्रश्नों के उत्तर (20-25 शब्दों में) लिखिए-

- (क) हमें किसी की भी स्वतंत्रता क्यों नहीं छीननी चाहिए?
(ख) पाठ का शीर्षक 'असल धन' क्यों रखा गया? अपने विचार प्रस्तुत कीजिए।
(ग) 'तूश प्रकरण' को अपने शब्दों में बताइए।

5. 'पक्षी संरक्षण का महत्व' बताते हुए अपने मित्र को (100 शब्दों में) पत्र लिखिए।

BENGALI

১. কোনটি কী ধরনের ক্রিয়াপদ লেখো-

ক) অমল পড়তে বসল।

খ) শিক্ষক ছাত্রকে পড়াচ্ছেন।

গ) ঘরেতে ভ্রমর এল গুনগুনিয়ে।

২. ক্রিয়াপদ থেকে ধাতু আলাদা করে লেখো।

ক) যাইব

খ) নড়িতেছে

গ) বলিল

৩. দ্বিকর্মক ক্রিয়া সম্বলিত দুটি বাক্য লেখো এবং বাক্য দুটির গৌণকর্ম ও মুখ্যকর্মের উল্লেখ করো।

৪. “সবাই চমকে উঠলাম”- সবাই কারা? চমকে উঠবার কারণই বা কী? চমকে উঠে সবাই কী করল?

৫. “তোমরা কি পাগল হইলে”- কে কাদের প্রতি কখন এই উক্তি করেন?

MATHEMATICS

1. The teachers organising the performance think that it will be difficult to arrange 625 student in one group. They think of dividing the group into two square arrangements. How many student can be there in each arrangement?

2. What is the difference between squares of any two consecutive numbers? Justify your answer using algebraic identity.

3. Which of the following is the odd one?

A. $100+20+20+4$

B. $400+40+40+4$

C. $900+60+60+4$

D. $1400+80+80+4$

4. The cube of a number is divided by the number itself. The result is 36. What is the number?

5. $\sqrt{64} - \frac{1}{\sqrt[3]{64}} = ?$

6. For which value of x is the equation true?

$$\sqrt[3]{-8} - \sqrt[3]{x} = 4$$

A. 4

B. -64

C. -216

D. 216

7. What is the value of $\frac{\sqrt[3]{64} + \sqrt[3]{125}}{\sqrt[3]{27}}$?

A. 2

B. 3

C. 4

D. 9

8. Find the square root of $(\sqrt{320} \times \sqrt{500})$

9. Draw a colourful Mind Map of Squares and Square Roots Chapter in one – fourth chart paper.

10. Subject Enrichment Activity: verify $(a + b)^2 = a^2 + b^2 + 2ab$ Geometrically in interleaf Practical pages.

SCIENCE

1. Which one is the example of contact force

a. Electrostatic

b. Gravitational

c. Frictional

d. Magnetic.

2. Main Constituent of CNG is

a. Methane

b. Ethane

c. Propane

d. Butane

3. The structure that helps trees to withstand against storm is-

a. Cell membrane

b. Cell wall

c. Cytoplasm

d. Nucleus

Consider the statements given below and choose the correct option.

a. Both assertion and reason are true and reason is the correct explanation of assertion.

b. Both assertion and reason are true but reason is not the correct explanation of assertion.

c. Assertion is true but reason is false.

d. Assertion is false but reason is true.

4. **Assertion:** Sharp knives are used to cut the vegetables.

Reason: Sharp edges exert more pressure.

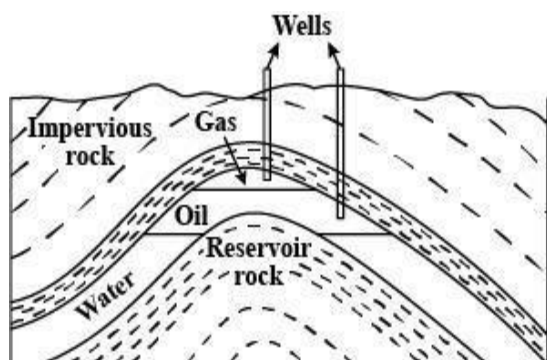
5. **Assertion:** Fossil fuels are important source of energy.

Reason: Fossil fuels do not provide energy to different industries

6. **Assertion:** The smooth endoplasmic reticulum (SER) synthesizes lipid.

Reason: SER is associated with ribosomes that helps in lipid synthesis.

7. The good source of energy is that source which would do a large amount of work per unit volume or mass, which may be easily accessible, may be easy to store and transport and be economical. There are two types sources of energy they are conventional and non conventional sources of energy. Conventional sources of energy includes fossil fuels like coal, petroleum etc. The fossil fuels are also called as non renewable sources of energy. When fossil fuels burns then acidic oxides of carbon , nitrogen and sulphur are released in the air and which causes acid rain. Because of acid rain the water and soil get affected. Again air pollution causes which leads to green house effect. Thermal power plant, hydro power plant are used to produce electricity. The thermal power plants are set up near coal or oil fields so that it can be used for producing heat energy which in turn used to produce electricity. In case of hydro power plant kinetic energy of flowing water or potential energy of water at a height is used for producing electricity. To avoid pollution now a days we are using some improved technology which are used in conventional sources of energy. When wood is burning in a limited supply of oxygen that time water and volatile substances present in it get removed and the residue formed is charcoal. Charcoal burns without smoke and has higher efficiency of producing heat also and hence there is no pollution. Bio gas is also used for producing heat because it burns without smoke and no residue is formed after burning.



- Name the petroleum product used for surfacing of roads.
- In the above figure, where petroleum and natural gas deposits are shown. Why do we find oil layer above water layer?
- While driving what are the tips we must follow to save petrol/ diesel/natural gas?

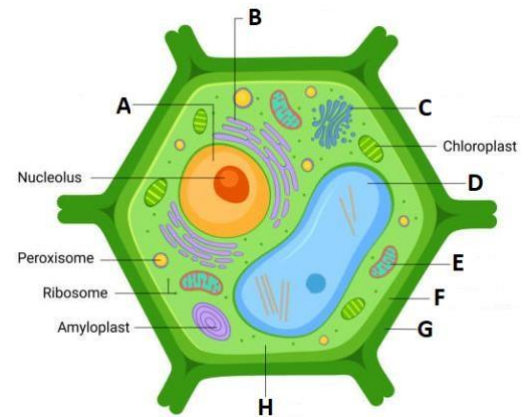
8. **Match the column**

COLUMN A	COLUMN B
a. Force	i. m^2
b. Pressure	ii. Newton
c. Area	iii. Atm
d. Atmospheric pressure	iv. N/m^2

9. Take a tumbler and fill it with water. Cover the mouth of the tumbler with a thick card similar to that of a postcard. Hold the tumbler with one hand while keeping the card pressed to its mouth with your other hand. Turn the tumbler upside down while keeping the card pressed to its mouth. Make sure that the tumbler is held vertical. Gently remove the hand pressing the card. What do you observe? Does the card get detached allowing the water to spill? With a little practice you will find that the card continues to hold water in the tumbler even after it is not supported by your hand. Also try this activity by using a piece of cloth to hold

10. Plants cells are different from animal cells in many ways. Observe the diagram given below and then answer the questions

- Identify the organelles labelled from A-H.
- Why does the nucleus lie in the periphery in the diagram ?



SOCIAL SCIENCE

A. TICK THE CORRECT OPTION:

- A revival of or renewed interest in something is called –
 - Imperialism
 - Renaissance
 - Revolution
 - Nationalism
- Assertion (A):** India is a sovereign country.
Reason (R): India is against exploitation in all forms and will try to establish economic and social justice.
 - Both Assertion (A) and Reason (R) are true, and R is the correct explanation of A.
 - Both Assertion (A) and Reason (R) are true, but R is not the correct explanation of A.
 - Assertion (A) is true but Reason (R) is false.
 - Assertion (A) is false but Reason (R) is true.
- Which message has been depicted by picture given below :



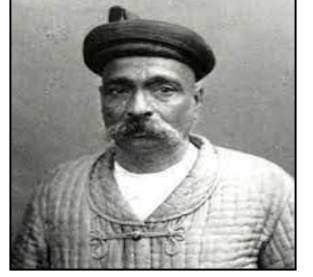
- Sovereignty
 - Socialism
 - Democracy
 - Secularism
- US Geological survey suggests that the Arctic sea bed may hold as much as 25% of the _____ oil and natural gas reserves .
 - World's discovered
 - World's undiscovered
 - World's Potential
 - World's Actual
 - The following question consists of two statement- Assertion(A) and Reason (R) . Answer these question selecting appropriate option below .
 A – Inexhaustible resources can be termed as renewable resource .
 R – Inexhaustible resource can be renewed either naturally or by human effort .
 - Both A and R is true and R is the correct explanation of A.
 - Both A and R is true but R is not the correct explanation of A.

(c) A is true but R is false.

(d) A is false but R is true.

B. ANSWER THE FOLLOWING QUESTIONS:

1. According to you, what was the real motive of the Britishers behind the passing of the Vernacular Press Act in 1878?
2. Identify the famous personality and write the popular slogan given by him.
3. "The Indian Constitution has often been criticised as a "Bag of Borrowings ". Do you agree with the statement? Justify your answer.
4. Suppose you are a resident of West Bengal and your friend is a resident of West Virginia. What are the differences between the citizenship policies of both the countries.
5. " Rapid population growth has resulted in over utilisation of the natural resources". Justify the statement .
6. Draw a web chart showing various measures of resource conservation.



SANSKRIT

1. श्लोकं पठित्वा प्रश्नानाम् उत्तराणि संस्कृतेन लिखत-

जाड्यं धियो हरति सिञ्चति वाचि सत्यं। मानोन्नतिं दिशति पापम् अपाकरोति।
चेतः प्रसादयति दिक्षु तनोति कीर्तिं। सत्सङ्गतिः कथय किं न करोति पुंसाम् ॥

i) एकपदेन उत्तरत-

- क) का मानोन्नतिं दिशति?
ख) का पापम् अपाकरोति?

ii) पूर्णवाक्येन उत्तरत-

क) सत्सङ्गतिः कस्याः जाड्यं हरति?

iii) उचितम् अर्थं चिनुत -

i) वाचि -----

क) सज्जनाः ख) हृदयम् ग) वाण्याम् घ) रोगरहिताः

ii) चेतः -----

क) हृदयम् ख) धैर्यवन्तः ग) सज्जनाः घ) वाण्याम्

2) अधोलिखितानि वाक्यानि संस्कृतभाषया अनुवादं कुरुत -

- क) मैं सदा सत्य बोलूंगा। ख) तुम कब विद्यालय जाओगे?
ग) वह आम खा रही है। ग) तुम किताब पढ़ो। ड) लता घर गयी थी।

3) भवतः मित्रं वल्लभः अष्टमीकक्षायाम् अष्टनवतिः प्रतिशतम् अङ्कान् प्राप्य उत्तीर्णः अभवत्। तं प्रति लिखिते वर्धापनपत्रे मञ्जुषातः उचितानि पदानि चित्वा रिक्तस्थानानि पूरयन्तु-

प्रिय मित्र वल्लभ!

सस्नेहं i)-----

अत्र सर्वं ii)----- भवताम् अपि इच्छामि । अथैव अहं तव iii)----- प्राप्तवान् । पत्रेण मया

ज्ञातं यत् त्वम् (iv)----- अष्टनवतिः प्रतिशतम् अङ्कान् प्राप्य उत्तीर्णः अभवः । संस्कृतविषये तु त्वं v)-----

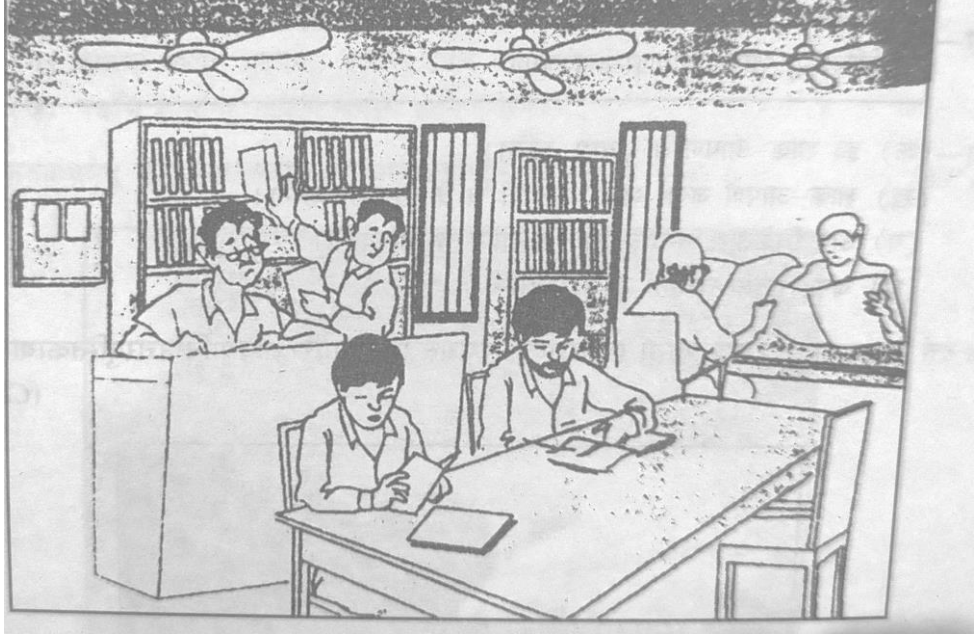
----- अङ्कान् लब्धवान्। मत्पक्षतः कोटिशः (vi)----- स्वीकुरु । एतत् तु तव vii) -----

एव फलम् अस्ति। ईश्वरः अग्रे इतोऽप्यधिका सफलतां भवते प्रयच्छतु इति एषा मम viii)-----।पितृभ्यां ix)-----प्रणामान् निवेदय । अनुजाय च स्नेहः।

तव अभिन्न मित्रम् x)-----

मञ्जूषा- { वसन्तः, अष्टमीकक्षायाम्, नमो नमः, प्रार्थना, परिश्रमस्य ,शतम्, मम, कुशलं, वर्धापनानि, पत्रं }

4)अधः प्रदत्तः चित्रं दृष्ट्वा मञ्जूषायां प्रदत्तपदानां सहायतया संस्कृतेन पञ्चवाक्यानि लिखतु।



मञ्जूषा- { ग्रन्थालयस्य, पुस्तकानि, चित्रं, जनाः, इदं, पठन्ति, अत्र, अनेकानि, सन्ति, समाचारपत्रम्, व्यजनानि, पुस्तकालये, गन्थपालौ, पुस्तककपाटिका। }

NOTE : HOLIDAY HOMEWORK FOR ALL SUBJECT TO BE DONE IN YOUR SUBJECT NOTEBOOKS PROVIDED BY THE SCHOOL.